

# ASP CAMSTOPPER®

**PLUGS** / MECHANICAL SEWER PLUGS

## PRODUCT'S ADVANTAGES

- **For temporary or permanent stopping.**
- **No.1 for security** : remotely installs and removes.
- **Quick installation and disassembly** : cam locking system in one movement.
- **Innovative** : patented product.
- **Certified "WRC Approved"** : accredited by an independent organization.

## OBTURATION OF PIPES IN SAFETY



**PATENTED PRODUCT**



# NORHAM

CONCEPTEUR ET FOURNISSEUR

Z.A DRUISIEUX — 26260 SAINT DONAT SUR L'HERBASSE - FRANCE

TÉL : 33 (0) 4 75 45 00 00 - FAX : 33 (0) 4 75 45 17 05 — [www.norham.fr](http://www.norham.fr)



FITTINGS  
& JOINTS

**PLUGS**

FLAP-VALVES

JUNE 2018

# ASP CAMSTOPPER®

## PLUGS / MECHANICAL SEWER PLUGS

### ▶ AREA OF USE

The CAMSTOPPER® mechanical plugs are recommended for temporary or permanent obturation. The CAMSTOPPER® mechanical plugs are quick and easy to install with a cam handle locking system.

The patented handle locking system makes it easy to install and remove the plug. With the help of its handling pole\*, it can even be installed from the top of the manhole. Operator safety is thus optimal.

4 models exist depending on the diameter of the pipe to be closed:

- CAM and CAM V, from DN 100 to DN 160 ;
- PRO, from DN 175 to DN 500 ;
- PRO SPC, for tailor-made projects.

**N°1**  
pour la  
**SÉCURITÉ**



\* For **CAM** range only.

### → CAM RANGE

#### ▶ DN 100 TO 160

- Working pressure 0,5bar ;
- by-pass Ø 1/2" BSP ;
- maneuverable remotely;
- removable without risk using a rope or cable (optional, please contact us).



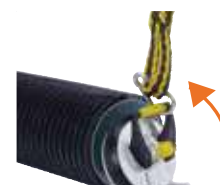
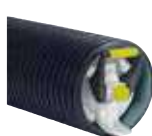
### ▶ DIMENSIONS

| Ref.*           | Description                     | Tolerance (mm) | WP (bar) | Weight (kg) |
|-----------------|---------------------------------|----------------|----------|-------------|
| <b>CAM090</b>   | CAMSTOPPER® "Original" patented | 90 - 97        | 0,5      | 0,2         |
| <b>CAM100</b>   | CAMSTOPPER® "Original" patented | 96 - 103       | 0,5      | 0,2         |
| <b>CAM105</b>   | CAMSTOPPER® "Original" patented | 102 - 107      | 0,5      | 0,3         |
| <b>CAM110</b>   | CAMSTOPPER® "Original" patented | 108 - 112      | 0,5      | 0,3         |
| <b>CAM120</b>   | CAMSTOPPER® "Original" patented | 116 - 123      | 0,5      | 0,3         |
| <b>CAM130</b>   | CAMSTOPPER® "Original" patented | 125 - 132      | 0,5      | 0,4         |
| <b>CAM140</b>   | CAMSTOPPER® "Original" patented | 136 - 142      | 0,5      | 0,4         |
| <b>CAM145</b>   | CAMSTOPPER® "Original" patented | 144 - 149      | 0,5      | 0,5         |
| <b>CAM150</b>   | CAMSTOPPER® "Original" patented | 147 - 153      | 0,5      | 0,5         |
| <b>CAM 150J</b> | CAMSTOPPER® "Original" patented | 148-154        | 0,5      | 0,5         |
| <b>CAM160</b>   | CAMSTOPPER® "Original" patented | 157 - 162      | 0,5      | 0,5         |

### ▶ MATERIALS

- **Nylon + fiberglass (20%)** : body and handle ;
- **EPDM** : WC grade seal complies with EN 681-1.

### ▶ CAM MOUNTING / DISMOUNTING



1. Introduction.

2. Positioning at the stop.

3. Locking.

4. Placing the rope.

5. Unlock and remove.

### ▶ ACCESSORIES

**Handling pole** for remote mounting and dismounting of **CAM** plugs.



| Ref.              | Description   | Weight (kg) |
|-------------------|---|-------------|
| <b>RALCAM3323</b> | Handling pole for remote mounting and dismounting of CAM plugs. | 1,1         |

# ASP CAMSTOPPER®

## PLUGS / MECHANICAL SEWER PLUGS

### → CAM V RANGE

#### ▶ AREA OF USE

The Lockable CAMSTOPPER® is a patented mechanical plug equipped with a locking system.

It has been developed to equip waste water management departments and allow them to control the connections to their networks.

To install and remove it, you must have a specific accessory, unique, the pole RALCAMV.

"Clipped" onto the pole, the lockable CAMSTOPPER® can be installed from the top of the manhole.

#### ▶ DN 100 TO 160

- Working pressure 0,5bar ;
- by-pass Ø 1/2" BSP ;
- maneuverable remotely.

#### ▶ MATERIALS

- **Nylon + fiberglass (20%)** : body and handle ;
- **EPDM** : WC grade seal complies with EN 681-1 .

#### ▶ DIMENSIONS

| Ref.*          | Description  | Tolerance (mm) | WP (bar) |
|----------------|--|----------------|----------|
| <b>CAMV090</b> | CAMSTOPPER® "Lockable" patented                                      | 90 - 97        | 0,5      |
| <b>CAMV100</b> | CAMSTOPPER® "Lockable" patented                                      | 96 - 103       | 0,5      |
| <b>CAMV105</b> | CAMSTOPPER® "Lockable" patented                                      | 102 - 107      | 0,5      |
| <b>CAMV110</b> | CAMSTOPPER® "Lockable" patented                                      | 108 - 112      | 0,5      |
| <b>CAMV120</b> | CAMSTOPPER® "Lockable" patented                                      | 116 - 123      | 0,5      |
| <b>CAMV130</b> | CAMSTOPPER® "Lockable" patented                                      | 125 - 132      | 0,5      |
| <b>CAMV140</b> | CAMSTOPPER® "Lockable" patented                                      | 136 - 142      | 0,5      |
| <b>CAMV145</b> | CAMSTOPPER® "Lockable" patented </td <td>144 - 149</td> <td>0,5</td> | 144 - 149      | 0,5      |
| <b>CAMV150</b> | CAMSTOPPER® "Lockable" patented                                      | 147 - 153      | 0,5      |
| <b>CAMV160</b> | CAMSTOPPER® "Lockable" patented                                      | 157 - 162      | 0,5      |

#### ▶ MOUNTING / DISMOUNTING



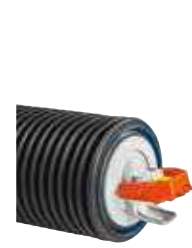
1. Insert the plug into the pipe with the pole



2. Lower the handle to lock the plug.



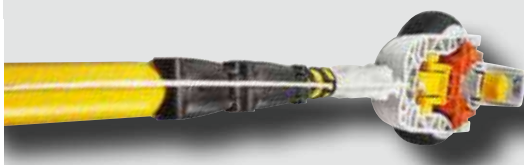
3. Pull the rope to extract the pole.



4. Pipe is locked.

#### ▶ ACCESSORIES

**Handling pole** for remote mounting and dismounting of **CAM V** plugs.



| Réf.           | Description   | Poids (kg) |
|----------------|---|------------|
| <b>RALCAMV</b> | Handling pole for remote mounting and dismounting of CAM V plugs. | 1,15       |



# ASP CAMSTOPPER®

## PLUGS / MECHANICAL SEWER PLUGS

### → CAM PRO RANGE

#### ▶ DN 200 TO 500

- Working pressure till 0,5bar ;
- by-pass Ø 1" BSP ;
- 80mm wide seal optimizes the resistance pressure.

#### ▶ DIMENSIONS

| Ref.*   | Description                | Tolerance (mm) | WP (bar) | Weight (kg) |
|---------|----------------------------|----------------|----------|-------------|
| PRO205W | CAMSTOPPER® "Alu" patented | 185 - 210      | 0,5      | 2,9         |
| PRO215W | CAMSTOPPER® "Alu" patented | 195 - 220      | 0,5      | 3,3         |
| PRO225W | CAMSTOPPER® "Alu" patented | 205 - 235      | 0,5      | 3,2         |
| PRO250W | CAMSTOPPER® "Alu" patented | 220 - 250      | 0,5      | 3,3         |
| PRO270W | CAMSTOPPER® "Alu" patented | 240 - 270      | 0,5      | 3,8         |
| PRO300W | CAMSTOPPER® "Alu" patented | 280 - 310      | 0,5      | 5,1         |
| PRO315W | CAMSTOPPER® "Alu" patented | 293 - 323      | 0,5      | 4,8         |
| PRO350W | CAMSTOPPER® "Alu" patented | 325 - 350      | 0,3      | 5,3         |
| PRO375W | CAMSTOPPER® "Alu" patented | 352 - 382      | 0,3      | 6,8         |
| PRO400W | CAMSTOPPER® "Alu" patented | 375 - 400      | 0,3      | 6,4         |
| PRO420W | CAMSTOPPER® "Alu" patented | 400 - 425      | 0,3      | 7,7         |
| PRO470W | CAMSTOPPER® "Alu" patented | 449 - 474      | 0,3      | 9,5         |
| PRO520W | CAMSTOPPER® "Alu" patented | 496 - 521      | 0,3      | 12,6        |

\*Autres dimensions sur demande

### → CAM PRO SPC RANGE

#### ▶ TAILORED TILL DN 1400

- Tailored manufacturing ;
- DN 200 to 1400 (contact us) ;
- by-pass Ø 1" BSP ;
- 80mm wide seal optimizes the resistance pressure.

#### ▶ DIMENSIONS

| Ref.*            | Description                 | Tolerance (mm) |
|------------------|-----------------------------|----------------|
| PROXXXWSPC       | CAMSTOPPER® "PEHD" patented | 25             |
| EX → PRO1250WSPC | CAMSTOPPER® "PEHD" patented | 1225-1250      |

#### ▶ MOUNTING / DISMOUNTING PRO AND PRO SPC



1. Introduction.

2. Adjustment by screwing the handle.

3. Locking.

4. Placing the rope.

5. Unlock and remove.



#### ▶ MATÉRIALS

- **Cast aluminium** : body ;
- **steel with epoxy coating**: handle ;
- **steel with coating against cold welds** : by-pass ;
- **EPDM** : WC grade seal complies with EN 681-1.



#### ▶ MATÉRIALS

- **HDPE** : body ;
- **steel with coating against cold welds** : by-pass ;
- **EPDM** : WC grade seal complies with EN 681-1.

NORHAM

# ASP CAMSTOPPER®

## PLUGS / MECHANICAL SEWER PLUGS

### → CAMSTOPPER® : " WRC APPROVED "

The CAMSTOPPER® is the subject of a technical approval "WRC Approved" issued by the Water Research Center. This certification attests to the quality and performance of new products on water and the environment.

#### CAM range certificate



#### PRO range certificate



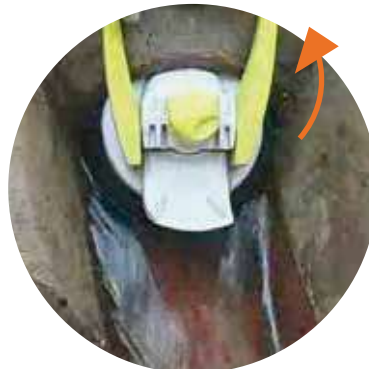
Documents available on our website : [www.norham.fr](http://www.norham.fr)

### ▶ OPERATION OF THE CAM AND CAM V RANGE IN MANHOLE AND CONNECTION STOOL

#### CAM



- CAM locked in place ;
- upstream pipeline closed.



- Unlocking by pulling the rope from the surface ;
- evacuation of the upstream flow.



- Plug removed from the surface ;
- N°1 for security.

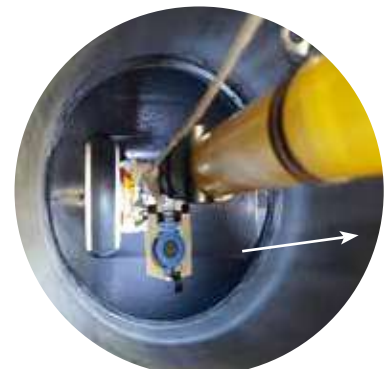
#### CAM V



- CAM V locked in place ;
- upstream pipeline closed.



- Unlocking with the pole ;
- evacuation of the upstream flow.



- Plug removed from the surface ;
- N°1 for security.

# ASP CAMSTOPPER®

PLUGS / MECHANICAL SEWER PLUGS

## → OTHER NORHAM SOLUTIONS

### T-SADDLE T-FLEX® MULTI

T-Saddle for multimaterial collectors and pipes.



### STINK-SHIELD® VERTICAL

Anti-smell valve for sewage and drainage pipe.



### CAMSTOPPER® VERROUILLABLE

Mechanical lockable plug.



Valeurs indicatives, ne remplacent pas les données du fabricant

**YOUR DISTRIBUTOR :**



Z.A DRUISIEUX  
26260 ST DONAT  
SUR L'HERBASSE - FRANCE  
TÉL : + 33 (0) 4 75 45 00 00  
FAX : +33 (0) 4 75 45 17 05  
[www.norham.fr](http://www.norham.fr)